



# Dutch Power



## General

Call sign	PBTZ
IMO Number	9547879
Year build	2009
Type of vessel	AHTS
Class	Lloyd's 100 A1 Tug LMC, UMS MACH MULTIPURPOSE AHT unrestricted
Nat. Authorities	Dutch Shipping Inspection Unrestricted Nav. GMDSS Sea Area: A1, A2, A3
GT/NT	257 GT / 77 NT
Owner	<b>G. Bouwman Towing &amp; Shipping B.V</b>
Yard	Gebr. Kooiman, Zwijndrecht
Speed	12,5 knots
Dollars Pull	45,1 ton

## Dimensions

Length overall	31.10 meter
Beam overall	9.50 meter
Depth at sides	3.10 meter
Draught aft	2.80-3.10 meter

## Propulsion system

Main engines	2 x Mitsubishi type S16R-MPTA
Output	2340 kW 2x 1591 BHP @ 1600 rpm
Gearboxes	2 x Reintjes type WAF763
Propulsion	Twin screw + nozzle: Van Voorden
Diameter	2.10 meter
Rudders	4 x Fishtail rudders; 2 x 2 rudders each nozzle; option separate steering.
Bowthruster	Tunnel thruster, 340 kW

## Auxiliary system

Generator sets	2 x Mitsubishi type 6D 16 T; 2x 120 KVA
Hydraulic set	1 x Mitsubishi type S6 A3 MPTK 600 hp
Transfer pumps	Water and fuel 2 x 35 m3 p hr.
Fuel separator	2 x Alfa Laval 5000 ltr. / 24 hrs.
Compressor	
Fres watermaker	HEM 3500 ltr. / 24 hrs.

## Tank Capacities

Fuel oil	112,00 m3
Fresh water	31,00 m3
Lub oil	2,65 m3
Dirty oil	2,65 m3
Sewage	12,72 m3

## Deck Equipment

Deck crane	Heila HLRM 200 / 4 / SL
Maximum lift capacity	9,0 tons at 16,31 mtr.
Anchor handling/	Maaskant type Maaskant Waterfall
Winch	Winch
Towing winch	main drum 700 mtr 42 mm 2nd drum 400 mtr 42 mm
Towing pins	Delta pins and Wire catcher
Push bow	Rubber Fender 900 mm
Stern Roller	4840 mm x dia 700 mm
Tuggerwinch Pull	8500 kN wire 18 mm 40 meter
Deck area	108 m2 free deck space
Deckload	15 t/m2

## Moonpool

622 mm x 422 mm

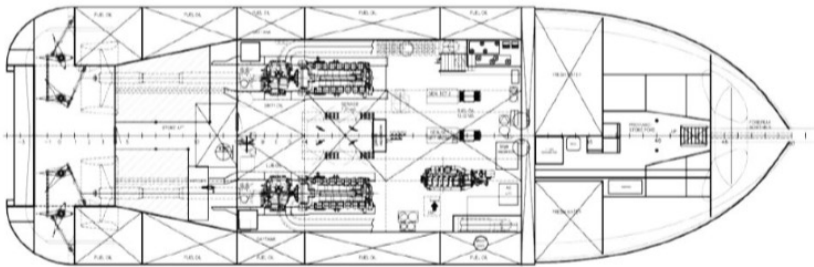
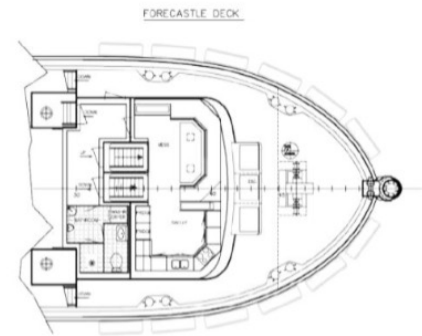
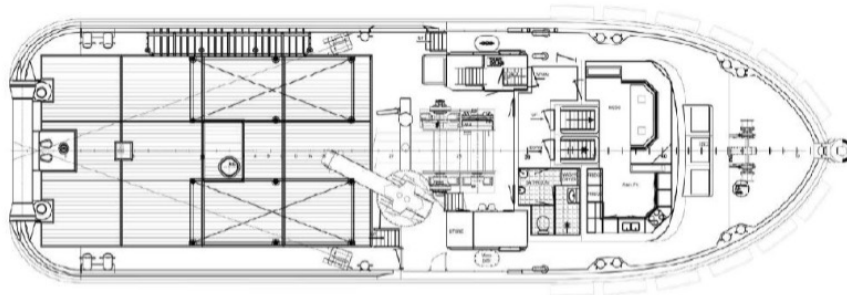
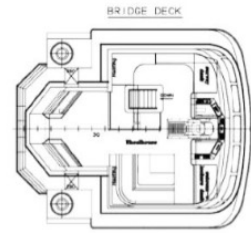
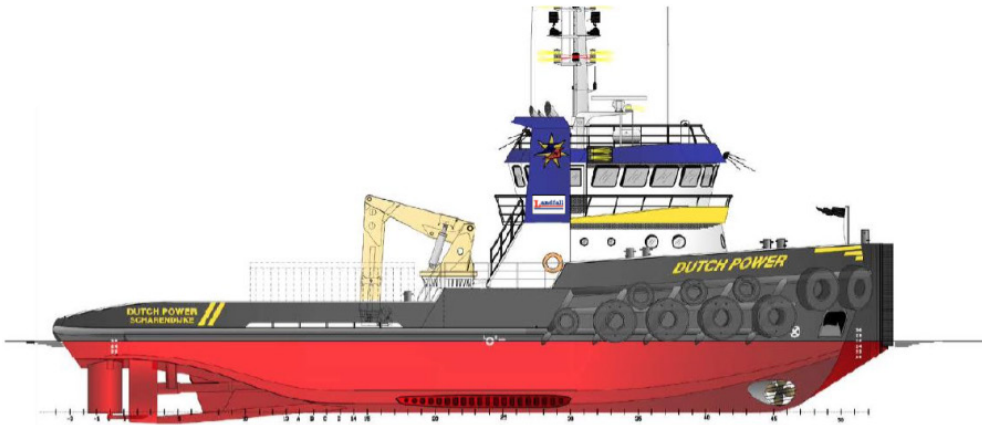
## Nautical Equipment

GMDSS	Thrane & Thrane Sailor RT5022 MF / HF radio tel Thrane & Thrane Sailorsystem 5000 150WPEP Navtex; JRC NCR 333
Radar system	Epibr / Sart River radar JMA-609-7m Sea radar JMA 5210-6 2x two-way portable GMDSS
VHF radio tel.	2 x VHF transceivers 2 x Sailor SP3520 2 x Standard HX370 (VHF)
Inmarsat C	2x Thrane & Thrane Sailor TT3000E
V-SAT	Satelite communication; v80G Intellian
Electronic Chart System	2 x Transas Ecdis chart Alpha
Autopilot	Alpha River Pilot MF Alpha Sea Pilot MF JRC JFE 380/200
Echosounder	2x JRC - NWZ 4570 / DGPS
GPS	Cassens & Plath
Magnetic Compass	Alphatron Alpha Mini Course
Gyro Compass	JRC JHS - 82
AIS	Alphatron
CCTV system	Alphatron Alphacall MF
Intercom	Alpha Watch
Watch alarm	Intellian i9W / Astra 3
Sat TV	8 pers. / 6 cabins / galley / sanitary fac.
Accommodation	All cabins & living spaces
Airco / heat control	





**G. BOUWMAN**  
TOWING & SHIPPING BV.



**for worldwide towage  
& support by dredging,  
offshore & civil projects**

**Ahts Dutch Power**

Anchor handling  
Towing Dollars Pull 45,1 ton  
Pushing / Convoy  
Supply Fuel / water / 108 m2 free deck space  
Dredging support  
Offshore renewables support  
Offshore Oil & Gas support  
Surveying Moon pool

**Dutch Power**

M +31 (0)6 54 790 686  
V-sat +31 (0)1 06 690 531  
E [tugdutchpower@gmail.com](mailto:tugdutchpower@gmail.com)



**Contact & visit address**

P/A Engelse kade 5, 4301 NA, Zierikzee, Netherlands  
T +31 (0)111 - 41 29 66  
E [info@bouwmantug.com](mailto:info@bouwmantug.com)

Iban nr. NL61 RABO 0303 4804 32  
BIC RABONL2U  
Chamber of commerce Middelburg 220 46089  
Vat number nl 8093.53.209b01